

Keeley Park, Clayton South

playground & park upgrade

As part of City of Kingston's commitment to improving open spaces, a draft concept plan has been prepared for park and playground upgrades at Keeley Park, Clayton South.

In 2013, a master plan was developed in conjunction with community to guide future improvements to Keeley Park. Using the master plan as a base, we have developed a draft concept plan that creates a range of formal and informal spaces for community use.

The draft concept plan incorporates the following elements:

- Fitness area around the existing basketball half court with pull up bars, monkey bars, parallel bars, sit up bench, step ups, push up bars, seating and landscaping.
- Social gathering space for the local community including a new regional shelter, BBQs, picnic tables, drinking fountain, waste bins and flexible lawn area.
- Expanded playground space that features a new large climbing net with slide, flying fox, basket swing, UFO spinner, wave runner boat, swan rockers, agility board, log steppers, and traversing 'river boats'.
- Natural play elements such as hand water pump, dry creek beds, sand play, and traversable rocks and logs to create sensory experiences for children.
- Improved fencing and new footpaths to improve accessibility within the park
- Tree and garden bed planting to provide shade and improve the park appearance. (including selected tree removal works).

Construction timeframes

Following the public consultation process, the design will be modified to reflect the community's feedback. **It is anticipated that works will take place in Autumn 2017.**

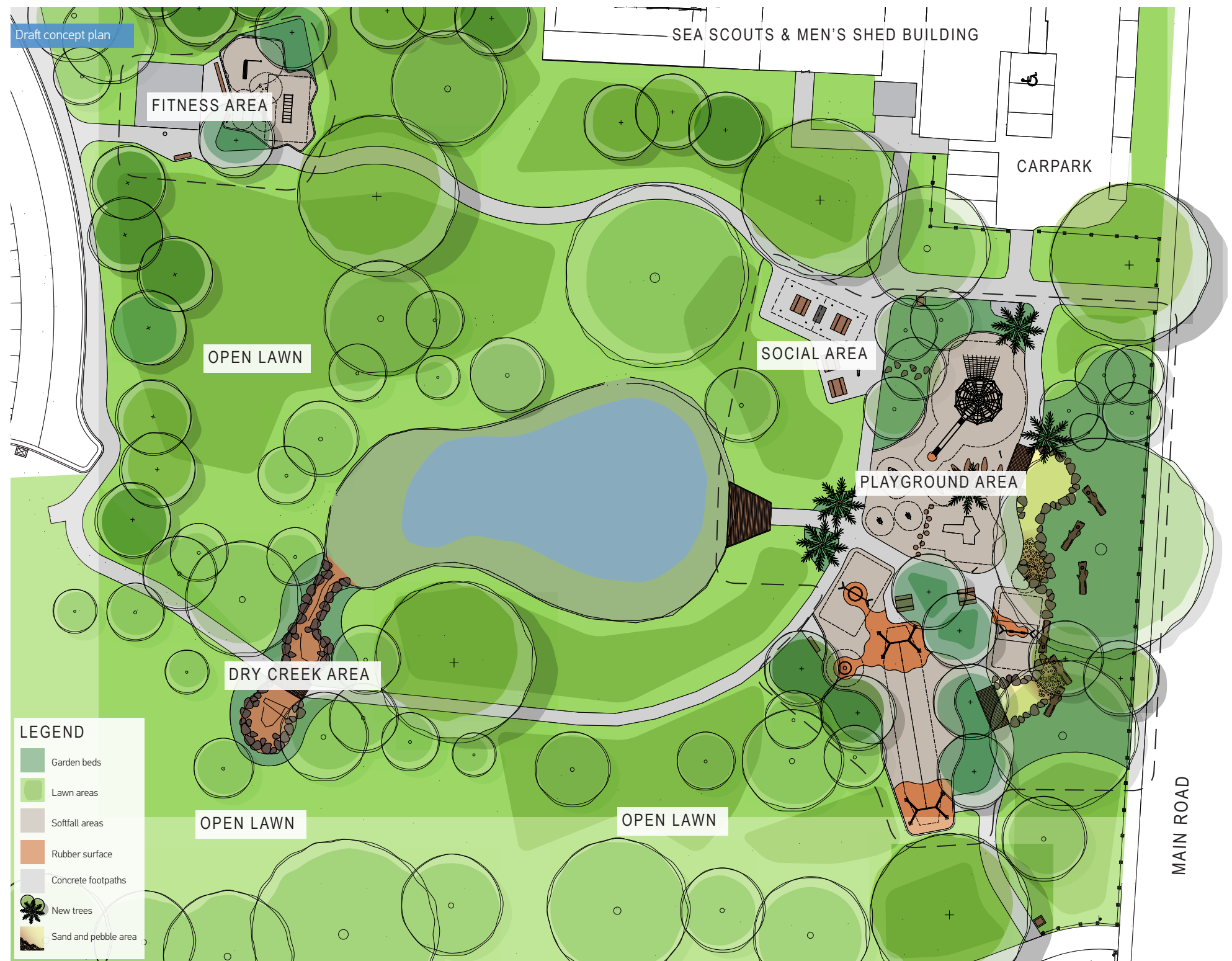
We value your feedback

For additional information or to comment on this project, please contact:

Council's Public Place Projects Team

📞 1300 653 356 or ✉ info@kingston.vic.gov.au

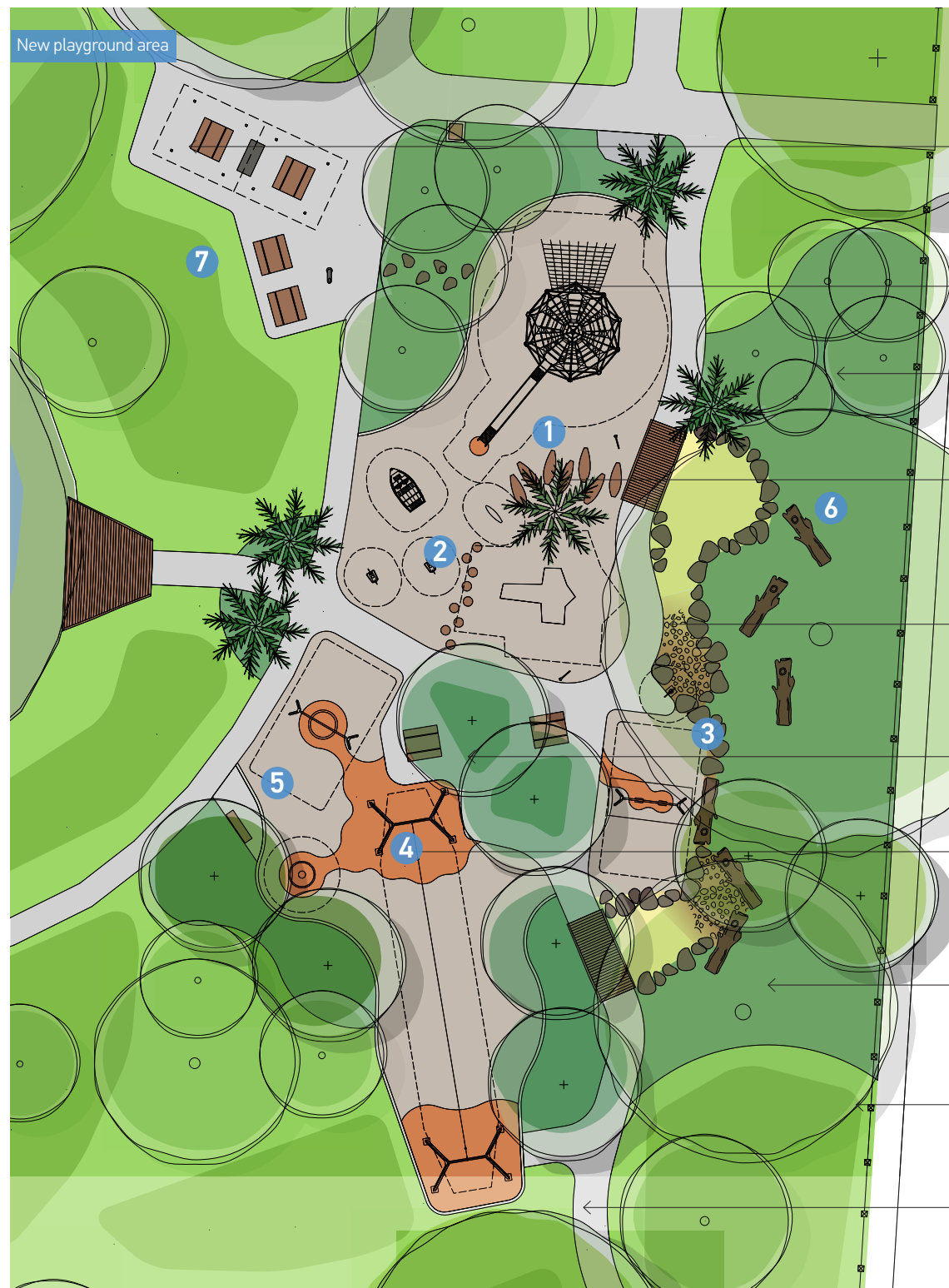
Letters can be sent to PO Box 1000 Mentone VIC 3194



Disclaimer: Information provided represents indicative design and are intended as guide only. There may be slight variation depending on detailed design constraints.

Keeley Park, Clayton South

playground & park upgrade



playground elements

Social gathering space
with regional shelter, BBQ, picnic tables, drinking fountain and lawn area.

Senior children play
with large climbing net and slide.

Natural elements
trees and planting to enhance nature play opportunities.

Rocking and balancing area
with wave runner boat, swan rockers, agility board, log steppers and traversing 'river boats'.

Natural play
with a hand water pump, dry creek beds, sand play, and traversable rocks and logs.

Central meeting space
with garden beds, shade trees, picnic tables.

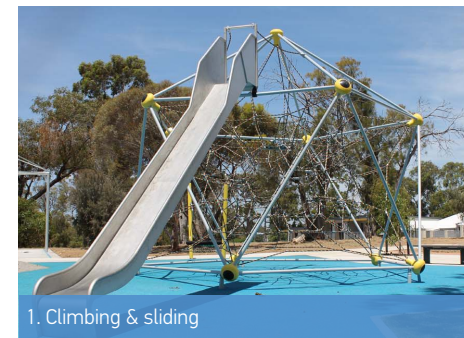
New playground equipment
including flying fox, basket swing and UFO spinner with accessible softfall.

Natural elements
trees and planting to enhance nature play opportunities.

New playground fence
to improve safety along Main Road.

New accessible footpaths
throughout the playground, which connect to surrounding footpaths and picnic areas.

playful landscapes



social spaces

